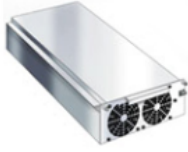


Product datasheet

Specifications

APC Symmetra RM 2-6kVA Power Module (2kVA)



SYPM2KU

Overview

Presentation	High density, double-conversion on-line power protection with scalable runtime.
Lead time	Usually in Stock

Main

Main Input Voltage	200 V 208 V
Main Output Voltage	200 V 208 V 230 V
Rated power in W	1400 W
Rated power in VA	2000 VA
Number of rack unit	0U
Number of cables	1
Provided equipment	Installation guide

Batteries & Runtime

Number of battery filled slots	0
Number of battery free slots	0

Physical

Height	8.26 cm
Width	21.59 cm
Depth	54.61 cm
Net weight	7.73 kg
Mounting location	Front
Mounting preference	No preference
Mounting mode	Not rack-mountable
USB compatible	No

Input

Network frequency	50/60 Hz +/- 5 Hz auto-sensing
Input voltage limits	155...276 V

Output

Maximum configurable power in W 1400 W

Packing Units

Unit Type of Package 1 PCE

Number of Units in Package 1 1

Package 1 Height 24.77 cm

Package 1 Width 35.56 cm

Package 1 Length 66.04 cm

Package 1 Weight 9.071 kg

Offer Sustainability

REACH Regulation [REACH Declaration](#)

EU RoHS Directive Not compliant

Mercury free Yes

China RoHS Regulation [China RoHS declaration](#)
Product out of China RoHS scope. Substance declaration for your information

Contractual warranty

Warranty 2 years repair or replace

Recommended replacement(s)